



#### MAIN POINT:

**Just Choices.**

*God wants everyone  
to be treated fairly  
and with respect*

#### LESSON FLOW:

Opening Discussion	5 min
Bible Time	5 min
Kids Care Vids	1 min
Story	15 min
Activity	10 min
Discussion Questions	5 min
Prayer	1 min
Just One Day	5 min

#### OPENING DISCUSSION: **Where did that come from?**

Have you ever wondered where all the things we use come from? A lot of the things we use every day came to us from another place in the world. Let's look at the clothes we're wearing right now. Have a friend look for the tag on the back of your top and see if it says the country it was made in. Find some of the countries on a world map to show how far the items have travelled.

**Did you know that most of your clothes weren't made in Canada?**

**What other things in our classroom were made in another country?**

Have your Kids Care group look around the room and assist them in finding out where some items were made.



**Kids Care Vids:** Download the educational videos to better engage your Sunday school students as you teach the Kids Care: Just Choices lessons.

There is a video for each lesson. Watch for the Kids Care Vids symbol in the lesson to indicate when to play them. *Please note, these are completely optional!*



Play Kids Care Vid Episode 2  
after the Bible Time

**Isaiah 58:6** International Children's Bible (ICB)

***I will tell you the kind of special day I want. I want you to free the people you have put in prison unfairly. Undo their chains. Free those to whom you are unfair. Free them from their hard labor.***

**Matthew 7:12** International Children's Bible (ICB)

***Do for other people the same things you want them to do for you. This is the meaning of the law of Moses and the teaching of the prophets.***

### BIBLE TIME: **Being Fair**

Did you know that sometimes the people who make things we use every day (like clothing, furniture, food, toiletries, etc.) aren't treated nicely? Some of the foods we eat were grown by farmers who were not paid a fair wage for planting, growing and harvesting the crops. Some of the clothing that we wear were made by people who were not paid a fair wage for working long hours to produce them. Sometimes these people are kids just like you. Can you imagine having to work all day instead of going to school or playing, and getting paid very little? That's not fair, is it?!

God made everyone, and loves everyone, and wants everyone to be treated fairly and with respect. It's not okay that some people are not paid fairly for the work they do. It's not okay that some people work in an environment that isn't clean or safe. It's not okay that sometimes people are forced to work very long hours. The Bible tells us how people should be treated:

**"I will tell you the kind of special day I want. I want you to free the people you have put in prison unfairly. Undo their chains. Free those to whom you are unfair. Free them from their hard labor."**

~ **Isaiah 58:6** International Children's Bible (ICB)

**"Do for other people the same things you want them to do for you. This is the meaning of the law of Moses and the teaching of the prophets."**

~ **Matthew 7:12** International Children's Bible (ICB)

God wants people to live in freedom and be treated with respect.

In order to help protect people who are being treated unfairly, there is a system in place to let people know which products were produced by those who are treated fairly. It's called "fair trade". Today we're going to learn about fair trade coffee.

### BACKGROUND INFORMATION: **What is fair trade?**

Fair trade is a way of buying and selling products that helps ensure farmers are paid a fair price and have good working conditions.

Trade is "unfair" when farmers do not receive enough money and have poor working conditions while the companies that sell their products make lots of money from them. That's not okay! U + I can do something about it!

## STORY: Fair Wages for Angel

CBM is working with its partners in the Philippines to help coffee farmers receive a fair wage. Listen to this story to find out what's happening:

*Angel and his wife are farmers in an indigenous community called Hopevale, in Capiz, Roxas City in the Philippines. They are both in their 60s and are two of the founding members and community leaders of the Hopevale Coffee Farmers Association. But before they had this group, they grew coffee for personal consumption and to sell to large companies, which pay farmers a very low price. Sometimes, big companies will take advantage of smaller farmers and won't pay them enough. They also are not overly concerned with the quality of the coffee product.*

*Life was not easy and Angel was fully dependent on their land for a small income. Hopevale is far from many essential services, including health care facilities and local markets and stores. Young people are leaving their families behind to pursue education and find more opportunities in bigger cities or overseas. This means that folks like Angel and his wife are left to work the land on their own with little help from the younger generation.*

*Land security is also an issue in Hopevale. There are groups who are trying to take lands from the people of Hopevale, causing tension and raising fear in the community. In addition, Hopevale is vulnerable to earth movement caused by small earthquakes. A few years ago, the community was forced to relocate after a dangerous tension crack destroyed their homes and church. Hopevale needed something to help gain stability and security through a livable income. That is what the Hopevale Coffee Farmers Association does for its members.*

*As a founding member and leader, Angel uses his knowledge and experience in coffee farming to help strengthen the farmers' association, and to improve pre and post-harvest farming practices. This then helps the farmers improve their crop. The program allows the farmers to learn new skills and gain access to resources that will help them grow coffee better. They are already seeing great improvement in the crops they produce, which means they can earn a higher price for their product.*

*The farmers also receive guidance when it comes to things that they may not be experts at but are important to selling coffee, like packaging and promotions. Because they work with people who care about fair trade, they won't get taken advantage of and are able to get fair payment for their coffee.*



*By putting a higher price on his coffee beans, Angel is more able to support the needs of his family and help build a sustainable future for the community of Hopevale. Angel expressed, "I am so glad that the time has come that CBM is helping our small local farmers in Hopevale. They helped us organize our Hopevale Farmers Association and introduced us to different government agencies that could help with the trade. They also introduced us to an organization that specializes in coffee processing and marketing, and facilitated a training for our association. This makes the future of our Hopevale community brighter, especially for those whose residents are dependent on farming."*

*Angel is excited about the future of coffee production in Hopevale. This project brings tremendous benefits to this poor indigenous community. The people became united and relationships were strengthened. Their knowledge and skills are improving as they adopt technologies that will enhance their way of farming and living. Their self-worth and dignity as an indigenous community is affirmed and their faith in Jesus Christ as their Savior, Lord and God is strengthened.*

### ACTIVITY: **String Game**

**How to Play:** Have your Kids Care group stand in a circle. Give each child one role which they will read out to the rest of the group. Hand one child a ball of string and instruct them to hold on to the end while passing the ball to another child that connects with their role (for example the farmer might be connected to the businessperson). Have your Kids Care group explain how the two roles might be linked together. This person then chooses another that they are linked to and passes the ball of string to them, still holding the string themselves. After a number of passes, there will be a web of string across the circle. Discuss together what this web might show them.

Tell your Kids Care group that there has been a drought affecting the crops. Have the farmers wiggle the string. This should move the whole web, showing how everyone is affected. Ask each person how they might be affected.

### DISCUSSION QUESTIONS:

**Why is it important to know where the stuff we buy comes from?**

**What difference can we make by buying fair trade items?**

**How does God want people to treat each other?**

### SNACK: **Fair Trade Fruit**

Banana, pineapple, mango (fruits grown in the Philippines) or select a fair trade product to share together.



### PRAYER:

*God, thank you for being fair and good in all you do. Thank you for giving us the freedom to make choices. Help us to make choices that benefit others around us and support those who produce things we use every day. Help us to treat our friends and family with kindness and fairness. Amen.*

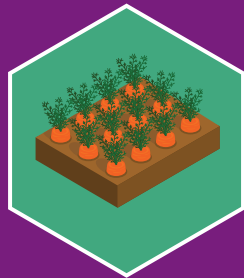


# Just One Day:

HERE'S AN IDEA: *Buy Fair Trade*

Talk with your family about products that are available to buy that are fair trade. Some ideas include coffee, tea, chocolate, spices, flowers, and clothing. Consider one item you could begin purchasing. Visit a store together that sells fair trade items, such as a grocery store, and compare the prices and impact of shopping with fair trade products in mind. You can also look online for ideas at [local.fairtrade.ca/en](http://local.fairtrade.ca/en)

While you're at the grocery store, take a look through the produce section and take note of all the different countries our fruits and vegetables come from!





[kidscare.cbmin.org](http://kidscare.cbmin.org)

---

[cbmin.org](http://cbmin.org)

© KIDS CARE, Canadian Baptist Ministries.  
2021. All rights reserved.

Canadian Baptist Ministries  
7185 Millcreek Drive  
Mississauga ON L5N 5R4

**PHONE:** 905.821.3533  
**FAX:** 905.826.3441  
**EMAIL:** [communications@cbmin.org](mailto:communications@cbmin.org)



**CBM**

*embracing a broken world  
through word & deed*